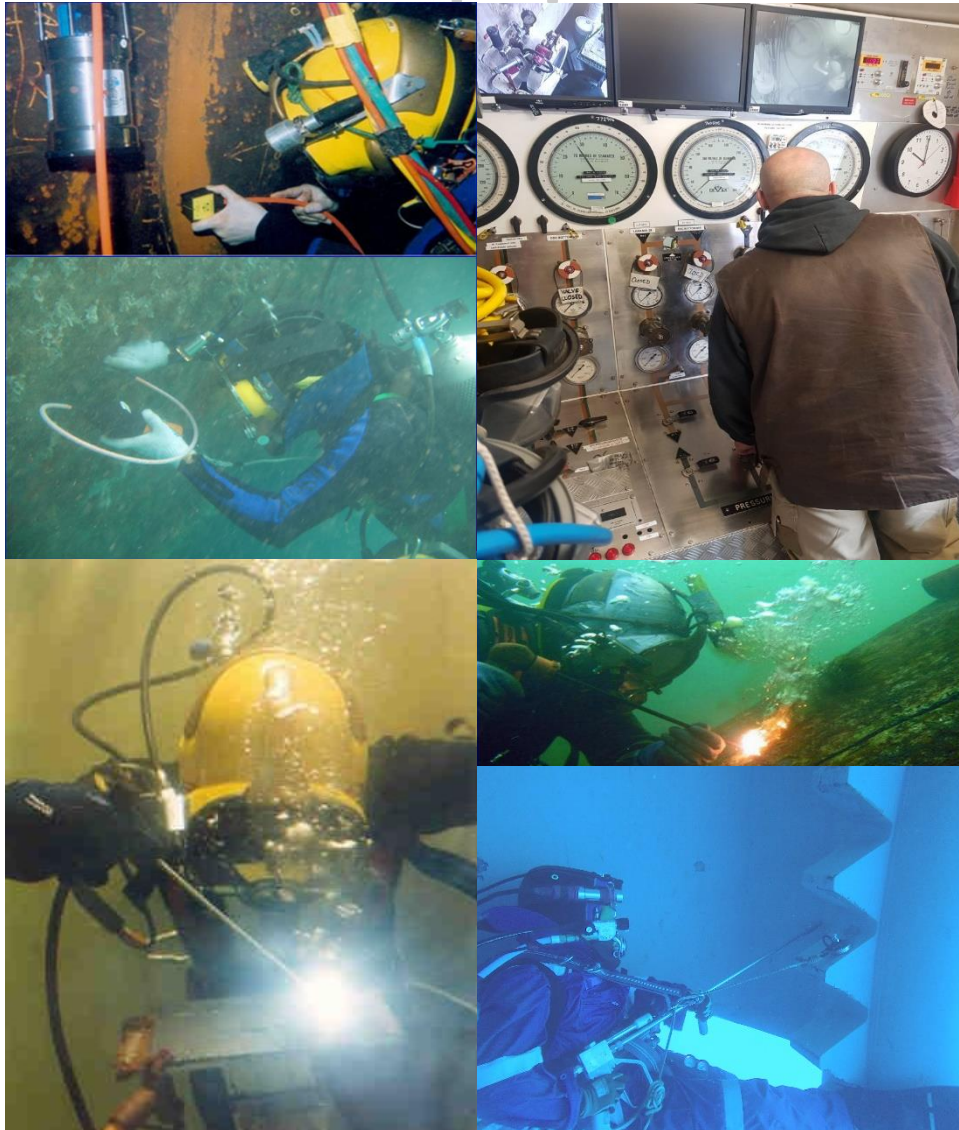


Offshore Marine Division

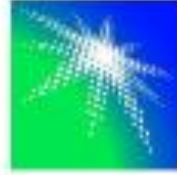




Clients



ارامكو السعودية
Saudi Aramco



معادن
MA'ADEN
شركة التعدين العربية السعودية
Saudi Arabian Mining Company



الهيئة العامة للطيران المدني
General Authority of Civil Aviation

بترو رابغ
Petro Rabigh



المؤسسة العامة لتحلية المياه المالحة
Saline Water Conversion Corporation



الشركة السعودية للكهرباء
Saudi Electricity company

سابك
SABIC



الخطوط الجوية العربية السعودية
SAUDI ARABIAN AIRLINES

جامعة الملك عبد الله
للعلوم والتقنية
King Abdullah University of
Science and Technology





ACTIVITIES AND SERVICES

Subsea Support Work

- Route survey for the pipeline.
- Damage assessment & Clamp Installation
- Installation of Cathodic protection .
- Assist in Pipeline laying and Trenching



MIX GAS & AIR DIVING SYSTEM

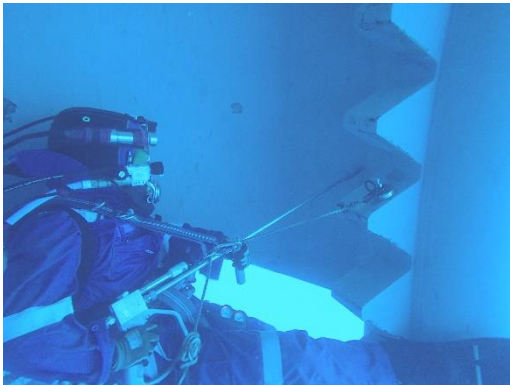
60" Twin Lock Decompression chamber. It consists of an Entry Lock, Main Lock And a medical lock. The entrance lock gives access to the Main lock for personnel, and the Medical lock is used to provide medicine and food etc to the personnel inside the main lock. There are two modes of communication from supervisor to diver / medic inside the chamber And vise versa. A chamber communicator on the chamber panel is connected to internal talk Back speakers in the main and entry locks. As backup, sound powered phones are also provided in case of power loss to the chamber.





SBM & SPM Maintenance Work

- Installation of SBM & SPM.
- SBM / SPM Subsea Hose inspection and Changing if required.
- SBM / SPM Chains Inspections.
- Subsea PLEM Change out.
- MGR / NDT and Class Survey of the Buoy and Chains.



Civil Construction Works

- Underwater Block Placing for Break water / Jetty construction.
- Seabed Leveling and Underwater Grouting work.
- Underwater Control Blasting.
- Underwater Cutting and welding works.

Third party inspection survey & reporting

