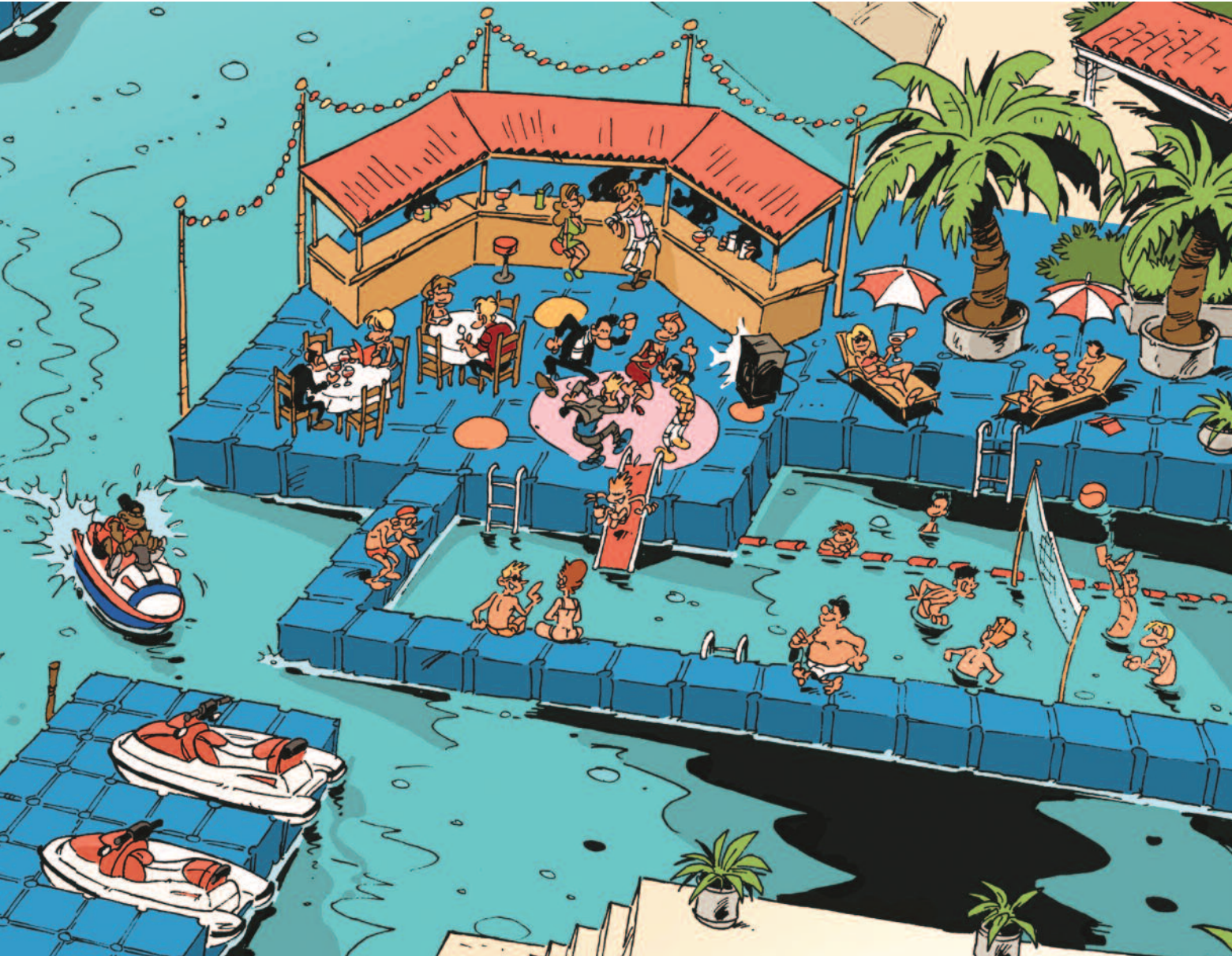


**THE ULTIMATE
MARINE ECO-SYSTEM**

www.mscl-marser.com

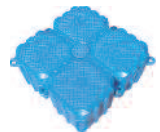
Daniel D. Kim
Division Manager
Offshore Marine Division.
Marine Services Co. Ltd.
www.mscl-marser.com
PO Box 5971, Jeddah 21432, Saudi
Arabia.
Tel : +966 12 6482146 Ext:224
Fax : +966 12 6482145
Mobile : +966 5 001 89 002





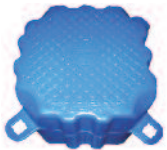
THE ULTIMATE MARINE ECO-SYSTEM

<http://www.parkdock.net>



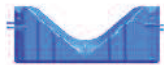
MAIN PARTS

Main Cube



규격 500x500x400mm(±3%)
 중량 6.6Kg(±3%)
 부력 97.5Kg / Cube
 소재 recyclable PE compound

Slider



규격 1000x500x270mm
 중량 11.0Kg(±3%)
 부력 130Kg / Slider

Center Pin



규격 180x240mm(±3%)
 중량 0.68Kg(±3%)

Bolt / Nut / Spacer



Fender



규격 500x270x135mm(±3%)
 중량 1.85Kg(±3%)

ACCESSORIE

Anchoring Pin



Handrail / pin



Cleat Pin



Mooring Bar



Winch System



Heavy Duty Cleat



Mooring Frame



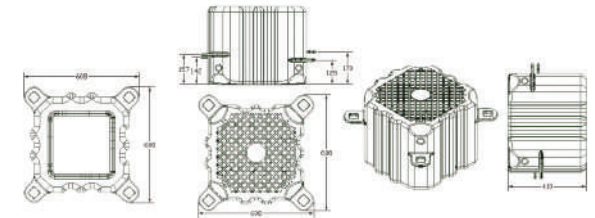
Solar Guide Light



수상조립식계류시스템



PARKDOCK *Evolutional Marine-Floating System you've ever desired*





☞ 해상 운송수단의 정박, 계류 시설

- 요트 · 모터보트 · 제트스키 등 해상 운송수단의 계류 시설
- 부두 작업용 플랫폼 · 가설교



☞ 레저 시설

- 각종 리조트의 해상 시설 · 수상 낚시터 · 수상 스포츠 플랫폼
- 수상 공연 연회 서비스 시설 · 제트스키 · 카약 · 조정 계류 시설
- 소풍 래프팅 플랫폼 · 경주용 레인, 경기용 시설



☞ 해안 양식장 시설

- 다양한 면적의 양식장 가두리 구조물
- 해상 간이도로 · 양식장 작업용 플랫폼



수상조립식계류시스템

Park dock's high quality plastic system boasts an exceptional lifespan, a high resistance to the most severe weather conditions and is relatively maintenance-free.

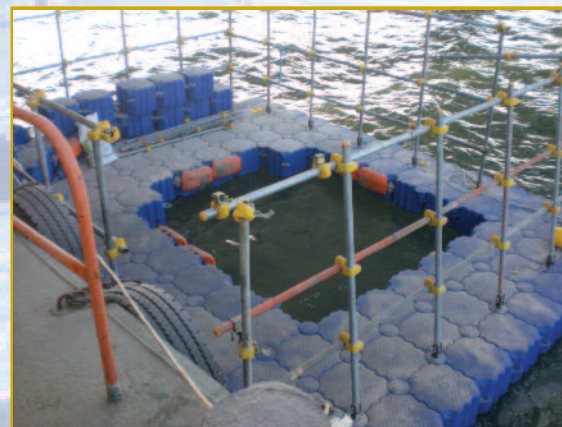
As well as being environmentally friendly, our innovative floating solutions are designed to be sustainable.

The modular floating system is easy to use and reliable, providing unlimited configurations and application options. It has become a must for commercial, residential, marina and recreational facility docks.



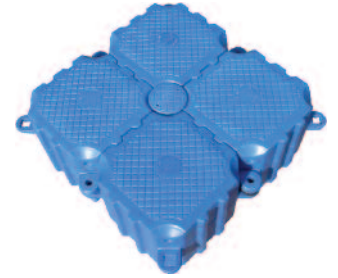
☞ 군사 · 해안경비 · 소방 시설

- 선박의 정박, 계류 시설 · 조난, 좌초선박 등의 인명구조용 플랫폼
- 소규모 도하용 부교, 뗏목
- 헬리콥터 이착륙장 · 임시 해로 표시, 수상 경계 표시



☞ 산업용 작업시설

- 해상유전의 작업용 플랫폼 · 폐수 · 하수처리 및 수질관리 시설
- 동력 바지선, 준설선 · 교각 · 댐 · 구조물 등에 대한
- 물막이 경계 수상 작업용 플랫폼



☞ APPLICATION

☞ Watercraft docking system

- Anchoring / mooring watercrafts
- Pier construction platform
- Temporary bridge

☞ Leisure sports / Resorts

- Marine structures for various resorts
- Aquatic performance, convention, service facilities
- Small rafting island
- Floating fishing platform
- Mooring structure for jet skis, kayaks, and other small boats
- Water sports platform

☞ Ocean farm

- Various sizes of marine farm peripheral structures
- Work platform
- Marine farm platform

☞ Military, Coast Guard, Fire Department, etc.

- Anchoring / mooring structure for vessels
- Small pontoon for river crossing, rafts
- Heliport
- Lifeguard platform
- Rescue platform for ships and shipwrecks
- Temporary sea route and warning signs

☞ Industrial work area

- Marine oil field platform
- Power plant, dredging system
- Flood control barrage
- Sewage and water treatment system
- Pier, dam and other safety measure platforms

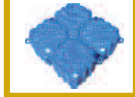
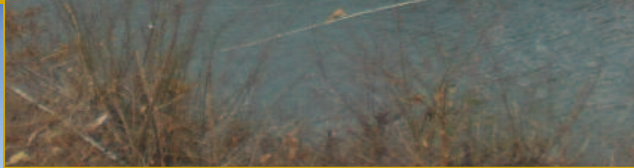
EVENT PLATFORMS

▼ 철인3종경기 해상 경기장
20M X 60M (5,000EA)



해상 훈련장



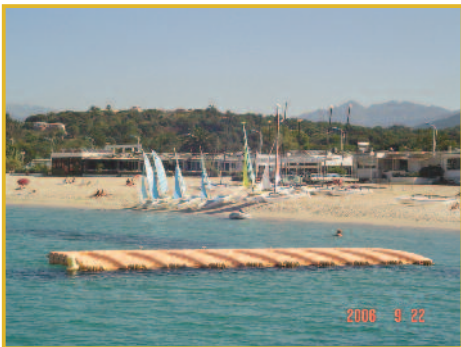


Park dock's modular dock sections can easily be configured to meet your needs. Floating docks and walkways are the ideal watercraft management network, providing watercraft management network, providing dry-docking, walk-around access at the water level, and a safe space to board your watercraft. Our docks are manufactured from low-density polyethylene that will not damage the finish on any boat or PWC. They are a uniquely engineered design that forms chambers which displace water and trap air for buoyancy and are not filled with any substance.















The Park dock's dock surfaces have a non-skid texture molded into the dock sections. The docks also have grooves to channel the water away. These two features work together to provide slip-resistant footing, even when the surfaces are wet. The dock system is easily configured to suit most any need. Combine various size sections and accessories to create a simple swim platform or an elaborate multiple-slip marina. Our docks have a low profile on water and blend easily into the environment.

The exceptional durability of our products make our floating dock an ideal choice. Compared to the 2 or 3 aluminum, steel or wooden docks that would have been bought during the life span of a Park Dock's floating dock. Aluminum requires a lot of energy to produce and wood is a natural resource that requires many years to regenerate. Wood also has to be protected every year with highly-polluting chemicals.

Increasing number of docks that are destroyed and replaced every year by extreme weather conditions. D&B docks can resist the most severe weather conditions in the world!









