

MARINE SERVICES CO., LTD.

Since 1975

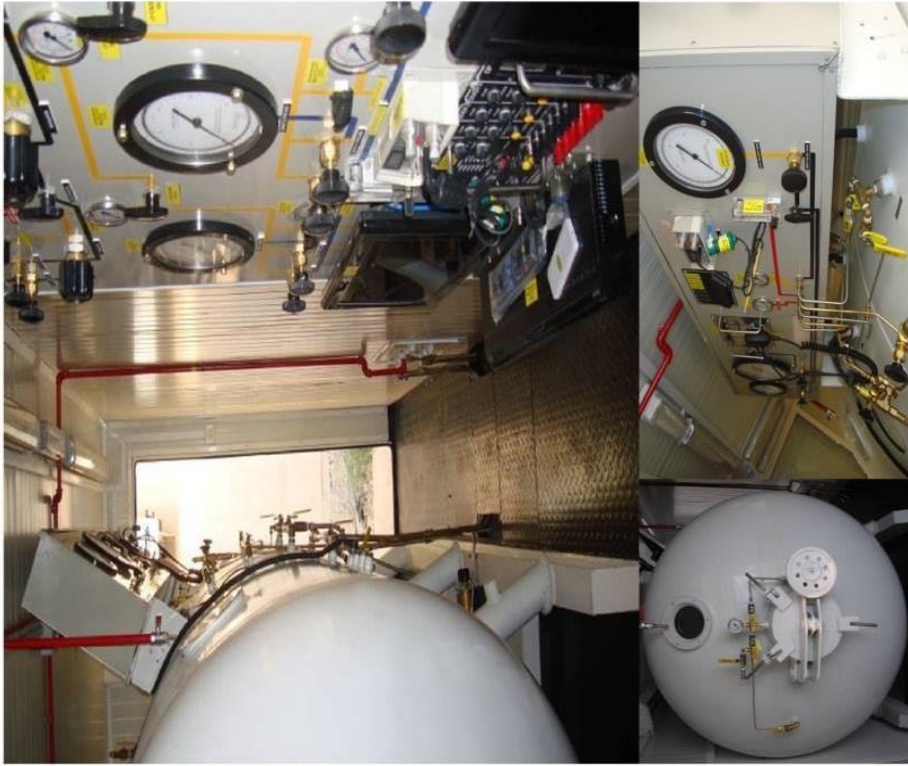


MARINE SERVICES CO., LTD.

OFFSHORE MARINE DIVISION EQUIPMENT

- Containerized Air/Mix Gas Dive Control System
With 60" Twin Lock Recompression Chamber
- Air Banks (16 cylinders x 50 ltrs)
- Quads (16 cylinders x 50 ltrs)
- Launch & Recovery System (LARS)
- Scuba Replacement (SRP)
- Zodiac (Rigid Hull) Rubber Boat with 185 HP Yamaha Outboard
- HP BAUER Compressors
- LP Ingersoll & Quincy Diving Compressors
- KMB#37 SuperFlow, Band Mask 28b & 18b
- Seamor Marine ROV/300M Range
- 15M Catamaran Fiberglass Diving/Survey Boat with 2x 250HP Mercury Outboard

Containerized Air/Mix Gas Dive Control System With 60" Twin Lock Recompression Chamber



MIX GAS & AIR DIVING SYSTEM

60" Twin Lock Decompression chamber. It consists of an Entry Lock, Main Lock And a medical lock. The entrance lock gives access to the Main lock for personnel, and the Medical lock is used to provide medicine and food etc to the personnel inside the main lock. There are two modes of communication from supervisor to diver / medic inside the chamber And vice versa. A chamber communicator on the chamber panel is connected to internal talk Back speakers in the main and entry locks. As backup, sound powered phones are also provided in case of power loss to the chamber.



Launch & Recovery System (LARS)

Specification:

- Mini Air basket deployment (2 diver)
- Robust painted steel skid
- Length = 3,170m
- Width = 2,100m.
- Height = 2,380m / 3,620m (transport/deployed).
- 1,000 kg 70m main wire basket winch.
- **650 kg 140m guide wire weight winch.**
- Twin hydraulic motor power pack with individual pumps per winch.
- Ascent rate of 18m/min.



Full certification pack to IMCA std.

Scuba Replacement (SRP)

SCUBA REPLACEMENT WITH 2DIVER PANEL AND DIVER COMMUNICATION

This panel is a 2 & 3 Diver HP/LP control panel, suitable for offshore use.

The panel is mounted with aluminum frame.

The panel pressure gauges are 62mm dia.

All the inlets and outlets are 3/8 & 1/4 swage lock, hard plumbed with ss tubing.

All LP valves are quarter turn ball valves and the HP valves are 1/4 inch needle valves.

The LP air supply has a max. Inlet working pressure of 15 bars (220 PSI) and the HP air supply has a max.

Inlet working pressure of 200bars



HP BAUER Compressors

HIGH PRESSURE BREATHING AIR COMPRESSORS

DIESEL

Features

- 6000 PSI (414 Bar) Max Pressure
- Grade E Breathing Air Filtration
- Dual Filter Filtration (60,000 Cu. Ft.)
- Inter stage Pressure Gauges
- Low Oil Shut Down
- Automatic Condensate Drains
- High Temp Shut Down
- Hour Meter
- 2 Fill Whips
- Diesel Engine
- Stainless Steel Intercoolers
- Electric Start and 12 Volt Battery with Box
- Visual CO & Moisture Indicator
- Lifting Eyes and Fork Lift Slots
- Stainless Steel Frame
- Steel Frame
- Powder Coat Blue Paint
- Auto Pressure Shutdown
- Dial-A-Pressure Switch
- Audible and Visual CO and High Temp Alarm with Shutdown
- Filtration Upgradeable (90,000 Cu. Ft.)
- Certified Lifting Eyes
- Large Base Mount Fuel Tank
- Remote Fill Panel
- Yanmar Diesel, Hatz Diesel or Honda Gas



ELECTRIC

Breathing Air Compressor MARINER 320

With 320 l/min. the new MARINER 320 is the most powerful portable compressor worldwide. Maximum F.A.D. and little space requirement qualify the MARINER 320 to be the top choice for professional use. The extremely robust block and corrosion-resistant components allow smooth operation even under toughest climatical conditions.



Seamor Marine ROV/300M Range



15M Catamaran Fiberglass Diving/Survey Boat

